



# TAI-SAW TECHNOLOGY CO., LTD.

No. 3, Industrial 2nd Rd., Ping-Chen Industrial District,  
Tao-Yuan, 324, Taiwan, R.O.C.

TEL: 886-3-4690038 FAX: 886-3-4697532

E-mail: [tstsales@mail.taisaw.com](mailto:tstsales@mail.taisaw.com) Web: [www.taisaw.com](http://www.taisaw.com)

## Approval Sheet for Product Specification

Issued Date:

Product Name: 248.45 MHz PHS IF SAW Filter (SMD 3.5x3.5 mm)

TST Parts No.: TB0251A

Customer Parts No.: \_\_\_\_\_

Company: _____
Division: _____
Approved by : _____
Date: _____

Checked by: \_\_\_\_\_ Andy Lee

Approval by: \_\_\_\_\_ Francis Chen

Date: \_\_\_\_\_ 2006,9,28



# TAI-SAW TECHNOLOGY CO., LTD.

No.3, Industrial 2nd Rd., Ping-Chen Industrial District, Taoyuan, Taiwan, R.O.C.  
 TEL: 886-3-4690038 FAX: 886-3-4697532  
 E-mail: [tstsales3@mail.taisaw.com](mailto:tstsales3@mail.taisaw.com) Web: [www.taisaw.com](http://www.taisaw.com)

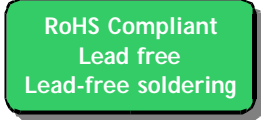
248.45 MHz PHS IF SAW Filter (SMD 3.5x3.5 mm)

Model No.: TB0251A

Rev. No.:4

## A. Maximum Rating:

1. Input Power Level: +5 dB<sub>m</sub>
2. Operating Temperature: -10°C to +60°C
3. Storage Temperature: -40°C to +85°C

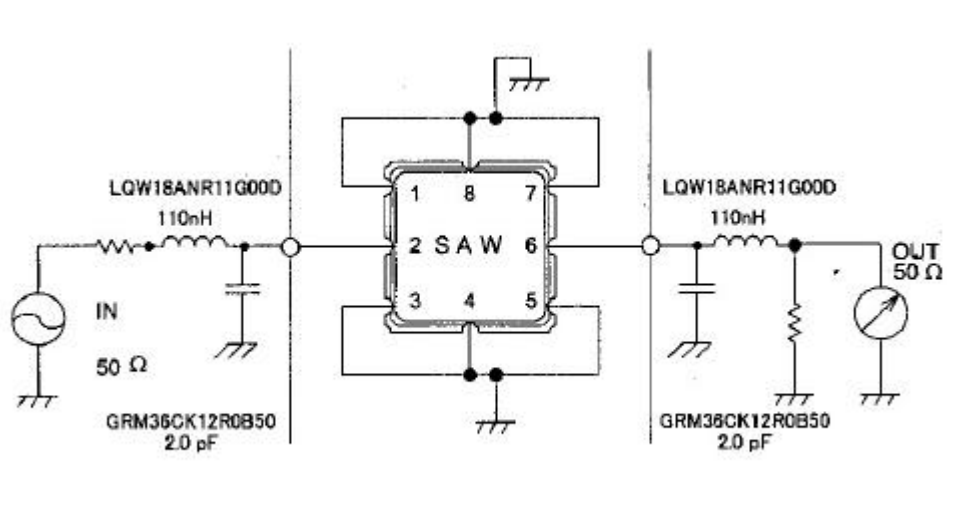


## B. Electrical Characteristics:

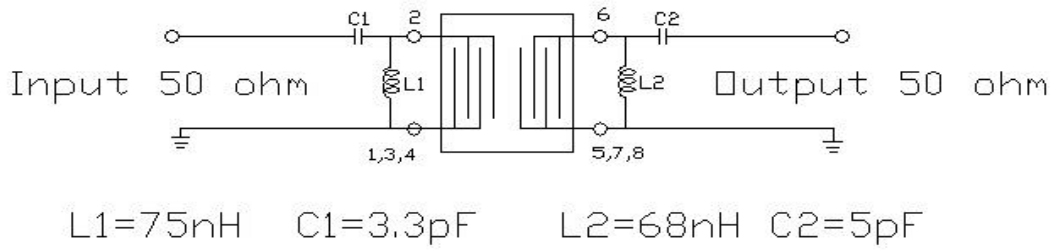
Parameters	Unit	Min.	Typical	Max.
Nominal Center frequency, Fo	MHz	-	248.45	-
Insertion Loss at Fo	dB	-	4.0	4.5
3 dB Bandwidth	MHz	-	0.56	-
Amplitude ripple, Fo±100 KHz	dB		0.55	1.0
Group delay ripple, Fo±100 KHz	μsec	-	0.55	1.0
Attenuation:				
Fo±600 KHz	dB	25	27	-
Fo±10.7 MHz	dB	40	60	-
Fo±21.4 MHz	dB	60	65	-

## C. Measurement Circuit:

Matching circuit (1)



## Matching circuit (2)



## D. Frequency Characteristics:

### 1. S21 Response

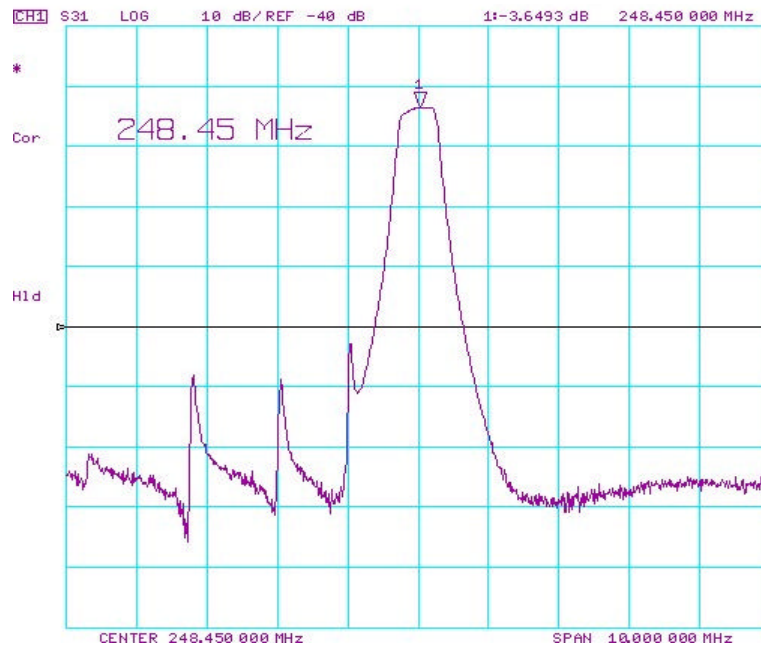


Fig1. Horizontal: 1MHz/Div Vertical: 10dB/Div

## 2. S21 Response (Passband group delay and Passband ripple)

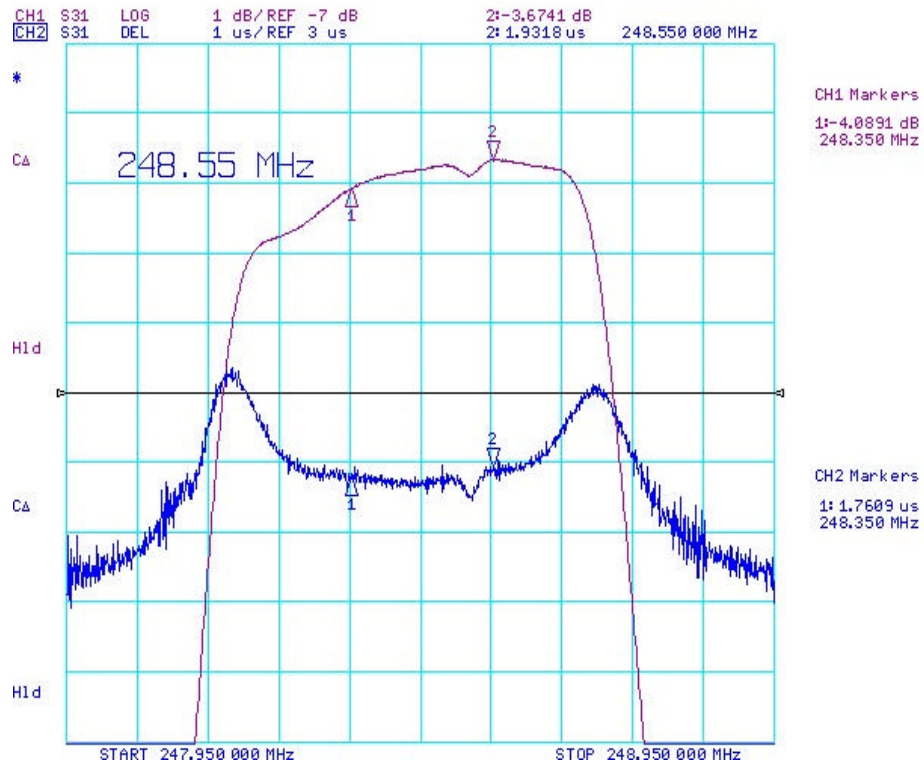
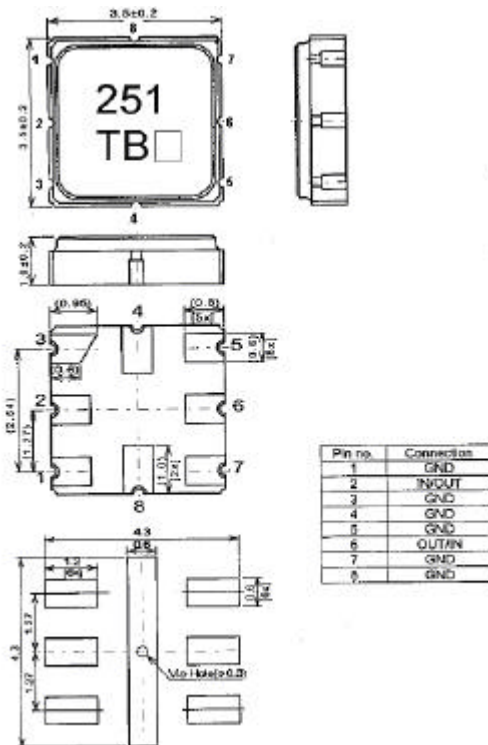


Fig2. Horizontal: 0.1MHz/Div Vertical: 1dB/Div 1μS/div

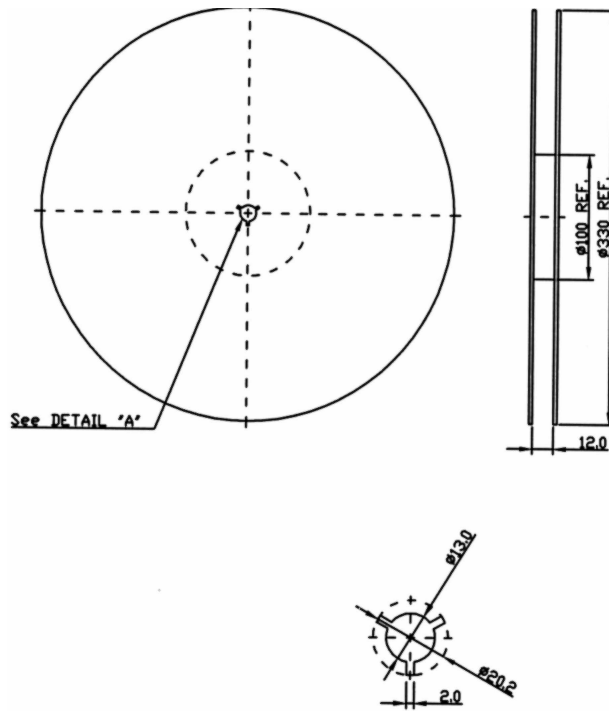
## E. Outline Drawing:



?: Date code

## G. PACKING:

### 1. REEL DIMENSION



### 2. TAPE DIMENSION

